

AGENDA

Meeting: CALNE AREA BOARD
Place: Calne Town Hall, The Strand, Calne SN11 0EN
Date: Tuesday 5 February 2013
Time: 6.30 pm

Including the Parishes of Calne Without, Bremhill, Hilmarton, Heddington, Cherhill, Compton Bassett and Calne.

The Area Board welcomes and invites contributions from members of the public. The Chairman will try to ensure that everyone who wishes to speak will have the opportunity to do so.

If you have any requirements that would make your attendance at the meeting easier, please contact your Democratic Services Officer.

Refreshments and networking opportunities will be available from 6.00 pm.

Please direct any enquiries on this agenda to Alexa Smith (Democratic Services Officer), on 01249 706610 or alexa.smith@wiltshire.gov.uk

or Jane Vaughan (Calne Community Area Manager), on 01247 721447 or jane.vaughan@wiltshire.gov.uk

The papers connected with this meeting are available on the Council's website at www.wiltshire.gov.uk

Press enquiries to Communications on direct lines 01225 713114 / 713115.

Wiltshire Councillors

Cllr Alan Hill, Calne South and Cherhill
Cllr Christine Crisp, Calne Rural (Chairman)
Cllr Chuck Berry, Calne North

Cllr Howard Marshall, Calne Central
Cllr Anthony Trotman, Calne Chilvester
and Abberd (Vice Chairman)

	Time
<p>1 Chairman's Welcome and Introductions</p> <p>The Chairman will welcome everyone to the meeting.</p>	6.30 pm
<p>2 Apologies for Absence</p>	
<p>3 Minutes (<i>Pages 1 - 8</i>)</p> <p>To approve and sign as a correct record the minutes of the meeting held on 11 December 2012.</p>	
<p>4 Declarations of Interest</p> <p>Councillors are requested to declare any pecuniary or non-pecuniary interests or dispensations granted by the Standards Committee.</p>	
<p>5 Chairman's Announcements (<i>Pages 9 - 14</i>)</p> <p>The Chairman will provide information about:</p> <ul style="list-style-type: none"> a. Youth Service Update (attached) b. Wiltshire Online: Connectivity and Provision (attached) c. Legacy for Wiltshire (attached) d. Our Community Matters: Calne and Villages Blogsite. 	6.40 pm
<p>6 Review of Calne Area Board 2009-13 (<i>Pages 15 - 18</i>)</p> <p>There will be a presentation giving a review of Calne Area Board from 2009-13.</p>	6.45 pm
<p>7 Partner Updates (<i>Pages 19 - 30</i>)</p> <p>To receive an update from the partners listed below:</p> <ul style="list-style-type: none"> a. Wiltshire Police (attached) b. Wiltshire Fire and Rescue Service (attached) c. NHS Wiltshire (attached) d. Calne Community Area Partnership (attached) e. Town and Parish Councils. 	6.55 pm
<p>8 Community Conversation</p> <p>In Calne, the Area Board meetings are scheduled around a 'community conversation' and the theme for this meeting is 'Community Health'. Councillor Keith Humphries, Cabinet Member for Public Health and Protection Services, will introduce the subject and there will be an opportunity for discussion.</p>	7.00 pm

9	<p>Draft Police and Crime Plan</p> <p>Kieran Kilgallen, Chief Executive of the Office of the Police and Crime Commissioner (PCC) for Wiltshire and Swindon, will introduce a draft Police and Crime Plan.</p>	7.30 pm
10	<p>Your Local Issues (<i>Pages 31 - 42</i>)</p> <p>Councillors will provide an update on community issues and progress on Area Board working groups. This will include:</p> <ul style="list-style-type: none"> a. Skate board park working group – Councillor Marshall b. CATG (highways working group) – Councillor Crisp c. Calne campus working group – Councillor Hill d. Sandpit Road working group – Councillor Trotman (attached) e. Air quality working group – to include ratification of Air Quality Management Area decision f. Section 106 report (attached). 	7.40 pm
11	<p>Area Board Funding (<i>Pages 43 - 52</i>)</p> <p>To consider five applications made to the Community Area Grants Scheme, as follows:</p> <ul style="list-style-type: none"> a. Calne Community Area Partnership - seeking £994 to pump prime a project that will encourage and promote Calne as a Fairtrade Community Area. b. Friends of Abberd Brook - seeking £1,750 towards a community art project to produce a mosaic at the Prince Charles Drive Underpass. c. Derry Hill & Studley Village Hall Trust - seeking £4,940 towards the refurbishment of kitchen facilities. d. SPLASH - seeking £4,600 towards ‘Calne ... Get Out There’ project offering sports, outdoor and residential activities for young people living in the Calne Community Area. e. Derry Hill Defibrillator Project - seeking £1,000 towards the purchase of a defibrillator for the village hall. 	8.00 pm
12	<p>Close</p> <p>The Chairman will set out arrangements for the next meeting.</p>	8.20 pm

Future Meeting Dates

Tuesday, 11 June 2013

6.30 pm

Calne Town Hall, The Strand, Calne SN11 0EN

Tuesday, 13 August 2013

6.30 pm

Calne Town Hall

Tuesday, 15 October 2013

6.30 pm

Calne Town Hall

MINUTES

Meeting: CALNE AREA BOARD
Place: Hilmarton Community Centre, Poynder Way, Hilmarton SN11 8SQ
Date: 11 December 2012
Start Time: 6.30 pm
Finish Time: 8.50 pm

Please direct any enquiries on these minutes to:

Alexa Smith (Democratic Services Officer), on 01249 706610 or alexa.smith@wiltshire.gov.uk

Papers available on the Council's website at www.wiltshire.gov.uk

In Attendance:

Wiltshire Councillors

Cllr Christine Crisp (Chairman), Cllr Chuck Berry, Cllr Howard Marshall, Cllr Jane Scott OBE (Leader of Wiltshire Council) and Cllr Anthony Trotman (Vice Chairman)

Wiltshire Council Officers

Ian Brown (Head of Revenues and Benefits), Alexa Smith (Democratic Services Officer), Elly Townsend (Wiltshire Time Credits Coordinator at Spice), Jane Vaughan (Community Area Manager) and Jenny Wilcockson (Digital Literacy Coordinator)

Town and Parish Councillors

Calne Without Parish Council – Richard Aylen and Ed Jones
Hilmarton Parish Council – Jeff Files

Partners

Wiltshire Police – Inspector Phil Staynings and Sergeant Simon Wright
Wiltshire Fire and Rescue – Mike Franklin

Calne Community Area Partnership – Malcolm Gull
Wiltshire Citizens Advice - Sarah Cardy (Chief Executive Officer)

Total in attendance: 35

<u>Agenda Item No.</u>	<u>Summary of Issues Discussed and Decision</u>
1	<p><u>Chairman's Welcome and Introductions</u></p> <p>The Chairman welcomed everyone to Calne Area Board and introduced the councillors and officers present. The Chairman welcomed Councillor Jane Scott OBE, Leader of Wiltshire Council.</p>
2	<p><u>Apologies for Absence</u></p> <p>Apologies were received from Laurie Bell (Director of Communications), Geoff Dickerson (Heddington Parish Council), Councillor Alan Hill and Will Kay (Youth Development Coordinator).</p>
3	<p><u>Minutes</u></p> <p>The minutes of the meeting held on 16 October 2012 were approved and signed as a correct record.</p>
4	<p><u>Declarations of Interest</u></p> <p>There were no declarations of interest.</p>
5	<p><u>Chairman's Announcements</u></p> <p>The Chairman drew attention to the written announcement included in the agenda pack regarding a masterplan for Calne. A display stand was available to view at the meeting.</p>
6	<p><u>Partner Updates</u></p> <p>a. The written update from Wiltshire Police was noted. Inspector Phil Staynings introduced himself and Sergeant Simon Wright. Inspector Staynings highlighted that Halloween had been a success in terms of crime and he was working with Calne Town Council to improve use of CCTV. Councillor Trotman added that Wiltshire Police now had a Facebook page. A question was raised about monitoring Facebook and the team explained it was a good medium to link with younger people and they tried to respond to any comment, positive or negative.</p> <p>b. The written update from Wiltshire Fire and Rescue Service was noted. Mike Franklin added that Wiltshire Fire and Rescue Service also had a Facebook page. He was pleased to report that, following inclusion in the Calne Community Area Network, a big increase in uptake of home fire safety checks had occurred, with 53 taking place in October. There had been a local incident in which five members of a family had been treated for carbon monoxide poisoning; this highlighted the importance of having a carbon monoxide detector fitted. There had been 12 chimney fires in the county in</p>

	<p>the first week of December. Please get your chimney swept if you intend to burn fossil fuels over the winter and visit the Wiltshire Fire and Rescue Service website if you would like further information on having your Christmas decorations tested for fire safety purposes: http://www.wiltsfire.gov.uk/.</p> <p>c. The written update from NHS Wiltshire was noted.</p> <p>d. The written update from Calne Community Area Partnership was noted.</p> <p>e. The Chairman stated that an update on the Community Area Young People's Issues Group would be requested for the next area board meeting.</p> <p>f. Calne Without Parish Council reported that white gates installation at Derry Hill was complete and the next project for the village was to have a defibrillator. The village was planting a tree at Chapel Street. Hilmarton Parish Council reported that a Community Speed Watch scheme was going ahead.</p>
7	<p><u>Spice Project</u></p> <p>Elly Townsend (Wiltshire Time Credits Coordinator at Spice) provided information about Wiltshire Time Credits.</p> <p>Wiltshire Time Credits was a tool to encourage more people to get involved in volunteering. There were personal benefits to volunteers in becoming involved in volunteering and wider benefits for the community. People can earn credits for an hour of volunteering and then spend them in a number of ways, for example by hiring a DVD from the library. Organisations external to Wiltshire Council were also involved, including Bowood House.</p> <p>The pilot scheme now engaged 200 people and 30% of these had not previously volunteered.</p> <p>Malcolm Gull (Calne Community Area Partnership) spoke about the introduction of the Wiltshire Time Credits scheme in Calne. There would be a meeting in late January with interested partners, including the Rotary Club and the Lions Club. The scheme was welcomed in Calne as an ideal vehicle to extend the large amount of volunteering already taking place in the community area.</p>
8	<p><u>Community Conversation</u></p> <p>Ian Brown, Head of Revenues and Benefits, and Sarah Cardy, Chief Executive Officer of Wiltshire Citizens Advice, introduced themselves and the theme for the meeting, 'Welfare Reform in Wiltshire'.</p> <p>Sarah explained the benefits system at present was confusing with 80-100 benefits available. Reform was taking place to make going to work pay, to reduce the benefits bill, to reduce dependency and to make the system simpler.</p>

	<p>Changes were already in place related to housing, tax credits (in particular child benefit), pregnancy grants and sickness funding.</p> <p>The welfare reform would put into place a universal credit, which would wrap up a series of benefits, including housing benefit. Most claims would take place online, any changes to circumstances would only need to be reported once, there would be a monthly payment made to households and a cap on the total amount of benefits awarded to a household, for example for larger families.</p> <p>Ian explained that 30,000 households were awarded benefit money in Wiltshire. Wiltshire Council had a role in collecting council tax. There were also plans to address under occupancy in social housing with 3,000 people affected in Wiltshire.</p> <p>With the reform, there would be locally discretionary social fund payments available to help with one off needs. A personal independence payment would replace disability living allowance as a fixed benefit for five years after an assessment had taken place. From 2013, the Government would reduce funding for benefits and from April, council tax bills would all have to contribute towards local support for council tax.</p> <p>More information on this subject was available to view on the Wiltshire Council website.</p> <p>There was then the opportunity to ask any questions. Points raised included:</p> <ul style="list-style-type: none"> • Planning applications should be linked to council tax locally – any extension now had to be reported to the valuation office and change to council tax would take place once the property was sold • There was the need to provide advice on budgeting since the new payments would be delivered on a monthly basis – GreenSquare had funding to provide this advice in the north of the county, but lacked this elsewhere • Wiltshire Council had agreed to fund a town and parish council shortfall, but were waiting for Government legislation.
9	<p><u>Wiltshire Online</u></p> <p>Jenny Wilcockson, Digital Literacy Coordinator, gave a presentation on the 'Wiltshire Online' project, which aimed to improve access to broadband, ensure that local people could access free computer support and increase usage of online government services.</p> <p>Jenny explained that an estimated 68,000 in Wiltshire and 3,300 people in Calne had never been online. The majority of these were older people but a high proportion were people with disabilities or families on low incomes. These were the target groups for the programme of delivering free computer support.</p>

	<p>The benefits of helping people to get online include:</p> <ul style="list-style-type: none"> • Avoiding loneliness and isolation by promoting free/cheap communication via email, Facebook and Skype • Helping people develop IT skills which could lead to better job prospects and higher earning potential • Helping people to save up to £560 per year by shopping online, using price comparison websites, using online auction websites or paying bills online. <p>As part of the programme, Wiltshire Council was seeking to recruit local volunteer coordinators and digital champion volunteers who could then provide the support in community venues such as libraries, or in someone's own home.</p> <p>Volunteers were now sought from the Calne Community Area and people were also invited to pre-register for support. Suggestions were also welcomed as to any WiFi hotspots in the area which might be suitable as venues under the scheme and could receive a 'Wiltshire Online' sticker. It was hoped that local computer groups would get in touch so that learners could be signposted to them. Working with the Community Hub would be important to the Programme.</p>
10	<p><u>The Legacy of 2012</u></p> <p>Councillor Jane Scott OBE, Leader of Wiltshire Council, provided a summary of the year's celebration events, including the Queen's Diamond Jubilee, the Olympic Torch Relay, the Festival of Celebration at Hudson's Field and the iconic picture of Michael Johnson at Stonehenge. This included showing a short film.</p> <p>£290,000 had been invested by Wiltshire Council to support communities, to support the economy and to publicise the county. A legacy board had now been established to carry on the success of this year through 2013 and beyond. The focus of the board would be to encourage every level of sport, from basic keep fit to promoting our future Olympians.</p> <p>Please get in touch through your Community Area Manager, Jane Vaughan, jane.vaughan@wiltshire.gov.uk, if you were considering arranging events for your community.</p>
11	<p><u>Your Local Issues</u></p> <p>Councillors and representatives of current working groups provided an update on community issues and progress on Calne Area Board working groups.</p> <p>a. Tom Harries reported that since the previous Area Board meeting, the skate board park working group had held a non uniform day and undertaken bag packing in Sainsburys to raise funds for their project. The Push it Wheel Good campaign to raise their profile was working well and some people modelled their badges and a sweatshirt. The Area Board Councillors were</p>

	<p>also given a badge each and were asked to where it in support of the project. An illuminated skateboard made for the Calne lantern parade was on display at the meeting. A bid for funding from Viridor was nearly complete. Councillor Marshall added that any donations for the group towards a new skate park would be gratefully received. These could be directed via Jane Vaughan or the Community Area Partnership.</p> <p>b. Councillor Crisp reported that the next meeting of the Community Area Transport Group (CATG) would take place on 22 January 2013.</p> <p>c. Councillor Hill had provided information about the Calne campus working group in advance of the Area Board meeting, please find this attached to the minutes.</p> <p>d. Councillor Trotman reported that the Section 106 (Sandpit Road) working group had put in metro lines at Oxford Road. This would be a possible solution to traffic calming at Abberd Way. Section 106 contributions for the applications approved for Oxford Road and Silver Street were discussed and whether the same approach for local involvement would be used as for the Sandpit Road. The Chairman proposed that Councillor Trotman was asked to continue his work to cover these two additional developments.</p> <p><u>Decision</u> Calne Area Board agreed that the Sandpit Road Working Group look at the Section 106 provisions for the two developments mentioned above.</p> <p>e. Councillor Hill had provided information about the air quality working group. The group was in the middle of a public consultation regarding the geographical extent of the area, which was due to finish at the end of December. Councillor Hill asked that, in order to progress with planning actions that would address the issue of air quality in the town, the Area Board considered deferring the decision of the choice of the Management Area to the ABC meeting in January.</p> <p><u>Decision</u> Calne Area Board agreed to defer the decision on the choice of site to the Area Board Co-ordinating group that would meet on Tuesday 8 January (based upon the results of the community ballot online and from the ballot box that had been in the Community Hub since the start of this piece of work and was available at the meeting).</p>
<u>Campus news 1</u>	
12	<p><u>Area Board Funding</u></p> <p>Consideration was given to the three applications made to the Community Area Grants Scheme.</p> <p><u>Decision</u> Calne Community Area Partnership were awarded £995 to provide two projects promoting reading and literacy amongst children aged 8-11 and</p>

11-14 for the Page Turners project.

Reason

The application meets the 2012/13 grant criteria and it provides positive activities for young people.

Decision

Calne Tennis Club were awarded £5,000 towards four new floodlit hard tennis courts at the Beversbrook Sports facility, conditional on the balance of funding being in place; all lease/landownership issues being confirmed and on the applicant's agreement to provide evidence of accessible membership opportunities and attempts to involve young people and families on low income to the Area Board following completion of the project.

Reason

The application meets the 2012/13 grant criteria and the club intends to reach out more widely to the community.

Decision

St Laurence Church Hilmarton Parochial Church Council were awarded £4025 towards the provision of a new kitchen/disabled toilet and nappy changing facilities.

Reason

The application meets the 2012/13 grant criteria and it will provide accessible space within the Parish Church in Hilmarton that will allow it to be used for secular activities.

Councillors were then asked to consider delegated authority over the elections period.

Decision

That in respect of urgent matters that may arise from time to time between meetings of an Area Board, the Community Area Manager, in consultation with the unitary councillors on the Area Board, be granted authority to make any necessary decisions (such as agreement of CATG funding allocations and Community Area Partnership Funding). A report explaining the decision and the reasons why it was considered to be urgent shall be reported to the next ordinary meeting of the Area Board to ensure that such decisions are subject to public examination.

And it was noted that:

At the ABC meeting held on 30 October 2012, the Area Board Co-ordinating group used its delegated authority to spend £250 as a contribution towards promotional items for the use of young people involved in the Calne Bowl Project 'Push it Wheel Good' campaign, to

	raise a positive image of young people in the Calne Community Area.
13	<u>Close</u> The Chairman thanked everyone for attending in the unpleasant weather and wished all a Happy Christmas. The next Area Board meeting would be held at 6.30 pm on Tuesday 5 February at Calne Town Hall, with refreshments available from 6.00 pm.

Chairman's Announcements

Subject:	Integrated Youth Service
Officer Contact Details:	Mal Munday, Head of Service
Weblink:	
Further details available:	

Summary of announcement:

Background

Youth work is a part of the Integrated Youth Service and we provide a range of services to young people from open access youth work to targeted support for those young people with additional needs to young people requiring specialist services.

Youth Work Offer

"Wiltshire Council's Youth work provision is 'needs led', developmental and community based. It is built on a youth work curriculum. This means: that we keep the needs of young people central to our practice at all times; that we work with them in the context of their own communities; and that we help them to develop the wide range of skills, knowledge and understandings they need to make a success of their transition from 'child' to 'independent adult and active citizen'. Clearly, this indicates that there is far more to youth work than the stereotype of supervising young people playing pool and table tennis in youth clubs. The latter bears little relation to the reality and breadth of the work, which when accurately described is all about the skilful and subtle art of informal education" **Learning from Life, July 2010, Wiltshire Council**

Future of Youth Work in Southern Wiltshire

Since 2009 the Council has used the Staffing Funding Formula to allocate the funds we have available across each Community Area so that everyone can see that there is a fair allocation. The formula is as follows:

- 25% of the total budget as a fixed amount for each community area
- 50% based upon the numbers of 13-19 year olds in each community area
- 10% based upon deprivation using the indices of multiple deprivation
- 10% based upon rurality/sparsity
- 5% held centrally to cover emergency and/or training/maternity cover

There are no plans to change this arrangement so whatever the size of the youth work budget it will be allocated across the County using the above. Clearly I do not know what the future holds or how the Council will decide what it's priorities are in the future, but to date Wiltshire has remained committed to providing services for young people at a time when other Authorities have significantly reduced their spend on youth work.

Chairman's Announcements

Youth Advisory Groups (YAGs)

The Wiltshire 11-19 Commissioning Strategy was agreed by Cabinet and the Wiltshire Children & Young People's Trust in September 2011. This included the implementation of a new local Youth Work Offer.

Part of the Wiltshire Youth Work Offer includes the formation of Youth Advisory Groups with standard terms of reference in each community area, led by young people. These groups will be linked to Area Boards and chaired by a young person under 25. Over 50% of the members will be under 19 years of age and the groups will play a key role in improving the coordination of positive activities for young people in local areas. This will involve encouraging partnerships that avoid overlap and fill gaps.

The groups will also be involved in planning and shaping local services from a young person's perspective. Furthermore they will help local young people know what opportunities and activities are available for them to access. Mechanisms will be established so that knowledge and ideas can be shared between the groups across the county.

The purpose of YAGs is to build on the work which Area Boards and young people have completed through their local Community Area Young Peoples Issues Group (CAYPIG) around increasing the voice and influence of young people. YAGs are a development of the CAYPIG and will be very much an opportunity for young people to hold local providers of services, including Wiltshire Council, to account for the service they provide and to also work with young people to see how we can improve services. It is for each Area Board to decide through consultation with young people whether they wish to retain the CAYPIG and link this to the YAG or to replace the CAYPIG with the YAG. This is a local decision and to date across the County different community areas have taken different decisions which is fine as we are keen to respond to local demands. This is part of our ongoing commitment to ensure that young people are involved in influencing the design and delivery of services they use and key to this is the involvement of young people in Area Boards

Subject:	Wiltshire Online: Connectivity and Provision
Officer Contact Details:	Wiltshire Online Team
Weblink:	www.wiltshireonline.org

Summary of Announcement:

The Wiltshire Online Programme aims to bring availability of standard and superfast broadband to homes and businesses across the county.

The main aims of the programme are:

- A minimum of 85%, hopefully up to 95% of premises being able to access superfast broadband by 2015
- All premises to have access to a minimum broadband service of 2Mbps by 2015.

The procurement for superfast broadband was launched on 2 July with British Telecom being announced as preferred bidder on the 12 November. Following a period of contract finalisation and final approval by the government, Wiltshire Council is anticipating signing the contract at the end of January.

In February, the Wiltshire Online Programme should then be able to provide details about the overall percentage coverage of superfast broadband, the technologies to be used and high level information about the rollout plans. An update will be given to Area Boards either by providing a chairman's announcement and links to the Wiltshire Online Web site, or by a presentation.

Once the contract has been awarded, BT will build their delivery team and start upon their detailed surveying of the infrastructure across Wiltshire. Surveying will occur in phases across Wiltshire with the network rollout following shortly afterwards in that area. The timescales for this and the number of surveys to be completed will be shared after the award of the contract.

Though specific information about each community area will not be available from February, the Wiltshire Online Programme will be able to provide more specific information as the project progresses through the phases of implementation. Ahead of each phase each Community Area affected will be provided with detailed information about the forthcoming rollout particulars, including, practical advice and also guidance on how to respond to any questions.

At any time the website www.wiltshireonline.org will have the most up to date information and the Wiltshire Online Team is available to speak to.

Subject:	Legacy for Wiltshire
Officer Contact Details:	Carlene Robinson Senior Project Support Officer 01225 713152 Carlene.robinson@wiltshire.gov.uk
Weblink:	Follow 2012 A year of Celebration at:  
Further details available:	Carlene Robinson Senior Project Support Officer 01225 713152 Carlene.robinson@wiltshire.gov.uk

Summary of Announcement:

2012 has been an overwhelming success for Wiltshire and it was wonderful to see our communities come together and celebrate. The community spirit and sense of pride that was apparent across the county was unique, and to see more than half our population attend the events just shows what we can achieve when we work together.

The challenge now is to keep that spirit and sense of achievement and pride alive, and to create a lasting legacy for Wiltshire. Keeping the momentum of last year going into 2013 and beyond will be good for our county. We need to take every opportunity to encourage communities to continue to come together, to take action to keep our economy buoyant and to encourage people to keep active and healthy.

This year we held a series of community evening events that provided a forum to share ideas and plans and to update on key information. We would like to reconvene these meetings in the new year to focus on what we can do in 2013 to create a lasting legacy and by working together how we keep the success of the last great year going.

We would like to invite you to attend one of the following events;

- Thursday 31 January, at County Hall, Trowbridge**
- Thursday 7 February at the Town Hall, Chippenham**
- Thursday 21 February at the Guild Hall, Salisbury**
- Wednesday 27 February at the Corn Exchange, Devizes**

All the evenings will start with tea and cakes at 6pm. The meeting will start at 6.30pm, finishing by 8pm.

The First 4 years

Calne Community Area Board 2009 – 2013

When the first Calne Area Board meeting took place on 7th July 2009, we talked about a new way of working that would see local Councillors, town and parish councils, partner agencies and organisations and local community and voluntary groups come together to find local solutions to local issues and to create a more resilient community for everyone.

As we come to the end of the first 4 years of the Area Board this is an opportunity to look back at some of the areas of work we have focussed on and some of the positive things that have been achieved so far ...

Encouraging Communities to take the lead:

Friends of Abberd Brook

In 2009 local people expressed their concerns about the state of the Abberd Brook. These people were invited to join a working group to find potential solutions. An Area Board working group of partners and the community was set up and its work led to the establishment of an independent community group, 'Friends of Abberd Brook'. FAB continues to be supported by the Area Board through Community Area Grants which have helped the group to engage local volunteers in Community Clear up Days, wildlife projects (education and protection), planting schemes, and community public art projects. The group continues to grow in strength and confidence and is currently working with local artists towards another public art project aimed at increasing local ownership and pride in the area.



'Make a stand for cycling' – Calne Community Cycle Ride

People of all ages said that an important local issue was promoting cycling in the community area. A project emerged which saw the Area Board fund modern/shiny stands and ran a community decision making exercise to decide where they should go.

The project was celebrated with the Area Board and Community Area Partnership's first ever Calne Community Cycle Ride. 2012 saw this enter its 3rd year, it has grown in popularity and has now become part of the 'Calne Green Day'. The Board has also supported the Transport Group to create local safe route boards to be implemented in the town.



The Community Hub

The initial concept of a community hub as a space for voluntary groups has grown to a thriving hub where hundreds of people have come together at different times for a huge range of reasons and activities. The Community Hub provides a 'non-authoritarian' link to services, opportunities and activities that everyone feels comfortable to access and many of the activities are planned with the most vulnerable in mind (job club, healthy eating project, introductions to internet technology, 'parenting' skills, reading with toddlers, volunteering opportunity bank, safe place scheme, help with public transport information, etc). The project is totally managed by volunteers and the hub is open 5 days a week by volunteers.

Championed by the Area Board; financially and through support, encouragement and enthusiasm the Hub has been an inspiration to other Wiltshire towns.



Asset Transfer

The Area Board has transferred ownership of its land at Castlefields Park to the Town Council to be managed by a Local Community Group, CARP, which continues to develop the facility for the benefit of local people.



Involving the Community:

CATG – community discussion (Lake View Issue)

Highways officers and local people disagreed over a zebra crossing, which did not fit with regulations and was financially prohibitive. A petition was presented to the Area Board. Local people were invited to attend a 'Community discussion' with officers, partner organisations and Councillors to unpick the issue and try to achieve a solution. People were presented with a blank map and took part in round table discussions which identified 6 alternative actions that might help address the situation.



The Area Board and the CATG have implemented 4 of these actions including a Speedwatch scheme, a new footpath link and a Speed Indicator Device.

Empowering young people and encouraging involvement in the community:

Participatory budgeting – Youth budget 2011

Young people identified activities for those experiencing difficulties accessing traditional youth services including: Careers book for young people with disabilities, 'Calne Past and Present' Art Project for young carers and their families, 'Wicked Wall' challenging physical activities for young people with physical disabilities.

They presented their projects at an Area Board meeting and local people voted for those that would deliver the best value in the area.

Calne Bowl Project

Local young people identified upgrading the local skate bowl as one of their top priorities. The Area Board and Town Council are working with a 'hard core' group of about 15 young people to move the issue forward. The group has developed plans, received planning permission and identified about half of the funds for their ambitious project. Young people are now working hard with the help of the working group to raise £10,000 as their own contribution to the project. As a part of this process the young people are learning how to engage with local community groups and leaders to promote their needs and wishes and how to go about 'doing it for themselves'.



Push it Wheel Good

Young people have also been working with the Area Board and partners to get involved in local events and volunteering as a part of their 'Push It Wheel Good' campaign which aims to challenge perceptions of young people as anti-social and to promote a more positive profile of themselves as active members of the community.



Inclusion

Calne Voices

The Calne Voices – People With Learning Difficulties and Autism project worked with people with learning disabilities and autism to explore experiences of and obstacles to life in Wiltshire.

The group involved more than 60 people with learning difficulties and autism at different times and, in order to facilitate the best methods of communication, the Area Board funded a facilitated art project, which ran alongside the Voices project and enabled people with even the most challenging communication issues to become engaged.

This led to the production of the Calne Voices film, launched in July 2012 to great acclaim from the first audience of around 70 people. The Area Board and Community Area Partnership have agreed to actively encourage projects and actions that address issues that have emerged from the film, including; opportunities for volunteering, access to employment and relationship advice and support, promotion of independent living, people with learning difficulties taking prominent roles in community projects.



The Launch of Calne Voices 2012

Focusing on Priorities

Community Health Fair - 2010

The Area Board held a Community Health Fair in partnership with the NHS and Community Partnership at the Hub. Area Board Councillors turned out to encourage local people to come in and have blood pressure, weight, checks and diet, stop smoking and sexual health advice.



Calne Health Fair - 2011

JSA event - 2011

In November 2011 the Area Boards and the Community Area partnership ran a Community Conference at John Bentley School, Calne to discuss the Joint Strategic needs Assessment and identify key priorities for the area. The Community Area Partnership is focussing on actions that address the issues that emerged including healthy eating and activity for children and young people.

2012 year of celebration

Diamond Jubilee

Representing the Community Area at the Queens Diamond Jubilee celebrations held in Salisbury on the 1st May, the Area Board created, produced and presented an exhibition celebrating the social history of the Calne Community Area from, from the discovery of Oxygen at Doctors Pond to the creation of the Friends of Abberd Brook and the voices of people with learning difficulties with Coleridge, Sausages, and a couple of old kings thrown in for good measure! The exhibition has now been given to the Heritage Centre for safe keeping.



Calne's tent at the Jubilee celebration

The Olympic Torch Relay

The Board joined with the Town Council to welcome the Olympic Flame to the area and organise and fund a project involving that gave every child in the opportunity to create a piece of bunting to help decorate the Town Hall for the duration of the year of celebration and to become a part of a legacy project at several local schools.



Torch relay - Town Hall decked with children's bunting

Community Funding

Over the last 4 years, the Calne Area Board has provided over £200,000 to support local organisations and projects. Examples of the projects supported include:

... Positive holiday activities for young people during school holidays ... Publish a book on WW1 ... Refurbish Toilet Facilities & create Unisex Disabled Toilet at Cherhill Village Institute ... Community Clean-up Day of the Abberd Brook, Calne ... Hilmarton 'white gates' to raise awareness of road safety ... Power-Kiting and Land-Boarding Club for Young People ... Environmental/Wildlife Projects - Abberd Brook Community Group ... Bike Stand Project ... New Age Curling equipment for people aged over 60 ... First Calne Community Cycle Ride event ... Calne First Responders (equipment) ... Energy Efficient Event ... Community Led Study and Production of a Safer Cycling Routes Plan/Map for Calne ... Equipment for new contemporary community choir ... Moveable Goalposts for rural youth football organisation ... Repair & Refurbish Chaveywell Wharf ...

Transport and highways

The Calne Community Transport Group has been active during the last 2 years and has delivered many local highways projects, including: Pedestrian refuge at Hilmarton ... New footpath at Lakeview ... Derry Hill and Studley signage, lighting and white gates to increase awareness of pedestrians ... New signage scheme to encourage traffic away from the town centre ... Repairs and renovation of junction at Hilmarton ... Inclusion of C113 and C50 into the Speed limit review of C and u/c roads ... 6 Community Speed Watch projects at Hilmarton, Goatacre, Compton Bassett, Sandy Lane, Quemerford and East Tytherton ... Speed Indicator Devices at Quemerford, Compton Bassett, Derry Hill, Sandy Lane, East Tytherton and Hilmarton.



Launch of the 'Jubilee Queen' accessible barge and lock project



Hilmarton Community Speedwatch

The future:

Calne Area Board has worked hard to build stronger links with the Community and strives to develop these and future links ... Current working groups are developing projects and actions in a wide range of areas: Calne Bowl Project, Sandpit Road (s106) group, Air Quality Management, Calne Campus and the Area Board Co-ordinating group continues to develop the Area Board to make it more relevant to local people.

For more information or to get involved please contact:

Jane Vaughan
Calne Community Area Manager

jane.vaughan@wiltshire.gov.uk

01249 706447



The first Calne Community Area Cycle Ride – 2010

Crime and Community Safety Briefing Paper

Calne Town Area Board

5th February 2013



1. Neighbourhood Policing Team

Sgt: Simon Wright

PC Hans Monahan

PC Alan Blake

PCSO Willox

PCSO Mussard

PCSO Yates

PCSO Cook

2. NPTs - Current Priorities & Consultation Opportunities:

Up-to-date details about Neighbourhood Policing Teams including team membership, current priorities and forthcoming community consultation events can be found on the Wiltshire Police Website.

□ Visit the new and improved website at: www.wiltshire.police.uk

3. Police Crime Commissioner: **Mr Angus Macpherson**

Please contact via Secretary Tel. 01380 733439

4. Performance and Other Local Issues:

Calne NPT continues to forge strong links with its community partners including local schools. The NPT officers will support teaching staff with mentoring or support in cases of bullying or problematic behaviour. This intervention by Police staff has a significant impact on young people and is a way of positively influencing lives. On a less formal level there are regular sporting fixtures with pupils at Springfield School.

Calne NPT has regular meetings with its Greensquare Housing Association Partners. This means information on problem tenants can be shared with positive effect. Officers have recently attended County Court in Swindon where a Pym House resident was given a suspended possession order for two years. This was as a result of information sharing after the discovery of a cannabis factory.

Calne NPT continues to act on information received through community intelligence. In the last quarter drugs warrants have been executed in the town and rural section. A resident from Champion Close has been charged with five offences under the Misuse of Drugs Act for class A, B and C drugs to the value of £80. A resident from Lodowicks in Bremhill has been charged with possession of 61 grammes of cannabis and cultivation of five cannabis plants. Their cases are to be heard at Chippenham Magistrates in February. In Page Close and The Knapp, Calne warrants

led to the seizure of small amounts of cannabis and disposal was by way of fixed penalty tickets.

Calne NPT are now working more closely with their colleagues at Chippenham NPT. This means that resources can be combined to greater mutual effect. An example is the recent pro-active passive drugs dog patrol. This was an evening where licensed premises and nightclubs in Calne and Chippenham were visited. Though detections were low, there was a positive message made which was valued by landlords.

Calne Police Facebook, which is managed by PCSO Mark Cook, is proving a great success in keeping the Public informed about what is happening in their town and is a forum of discussion and debate. Currently, 955 persons are recorded as liking the site and up to 143,000 are subsequently made aware of Calne issues. All issues are covered from lost pets, recovered pedal cycles, advice on home security, Blues n Zuz marketing, up-dates on Police warrants and weather conditions. The recent apprehension of illegal immigrants on Porte Marsh Trading Estate attracted 6,700 hits. On average 2,000 persons engage directly with the site every week. The Calne Police Facebook is the most successful Neighbourhood Policing team site.

The Calne Pub Watch Scheme continues to be well supported by Licensees, meetings are held monthly and the Police attend every meeting to support the Licensees and share information with stake holders. I am pleased that most Licensees continue to take a robust stance against those within our community who think they can engage in alcohol related violence or crime and issue appropriate bans. Most people know the consequences should they engage in alcohol related crime and or breach their banning contracts. The Police will fully support responsible Licensees committed to running a professional business.

Many successes during the night time economy would not have been possible without the close working relationship with our partners, in particular Calne Town CCTV provide us with high quality footage during the late evening/early hours of Friday and Saturday. Calne CCTV often direct officers to events before they unfold into something more serious. The CCTV operators act as an extra officer with investigation of retail crime and criminal damage offences in the town. They supply a steady stream of community intelligence and assist with location of missing or wanted persons.

Calne Blues n Zuz Disco for 11-16 years olds continues providing young people the opportunity to socialise in a safe environment. Our thanks to the headmaster of John Bentley School for the use of the main hall to run this event and also volunteers who give of their time. The disco runs from 1900-2130 hours once a month and the disco on December 14th 2012 attracted 200 youngsters. The main raffle prize was an Ipod with a video player.

EN Calne	Crime				Detections	
	January 2011 - December 2011	January 2012 - December 2012	Volume Change	% Change	January 2011 - December 2011	January 2012 - December 2012
Victim Based Crime	956	836	-120	● -13%	17%	22%
Domestic Burglary	58	37	-21	● -36%	7%	24%
Non Domestic Burglary	155	127	-28	● -18%	3%	4%
Vehicle Crime	92	79	-13	● -14%	2%	6%
Criminal Damage & Arson	224	185	-39	● -17%	11%	11%
Violence Against The Person	155	163	8	● 5%	46%	45%
ASB Incidents (Year to Date)	740	621	-119	● -16%		
Wiltshire Police are compared against a group of 8 most similar forces. Wiltshire Police have performed in line with peers and better than average for Victim Based Crime and Domestic Burglary in the previous 12 month period (December 2011 - November 2012).						
* Detections include both Sanction Detections and Local Resolution						

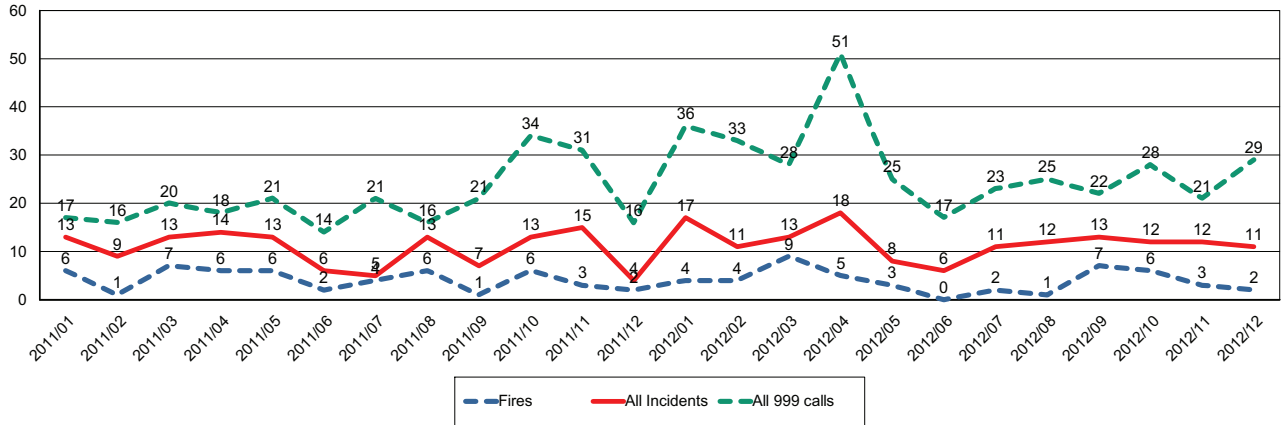
Simon Wright – Police SGT Chippenham.



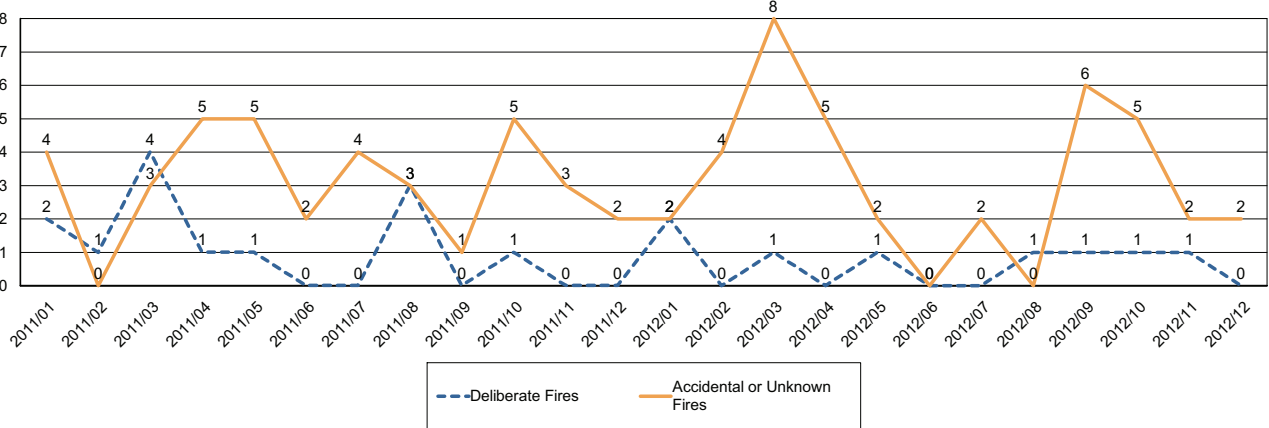
Report for Calne Area Board

The following is an update of Fire and Rescue Service activity up to and including December. It has been prepared using the latest information and is subject to change.

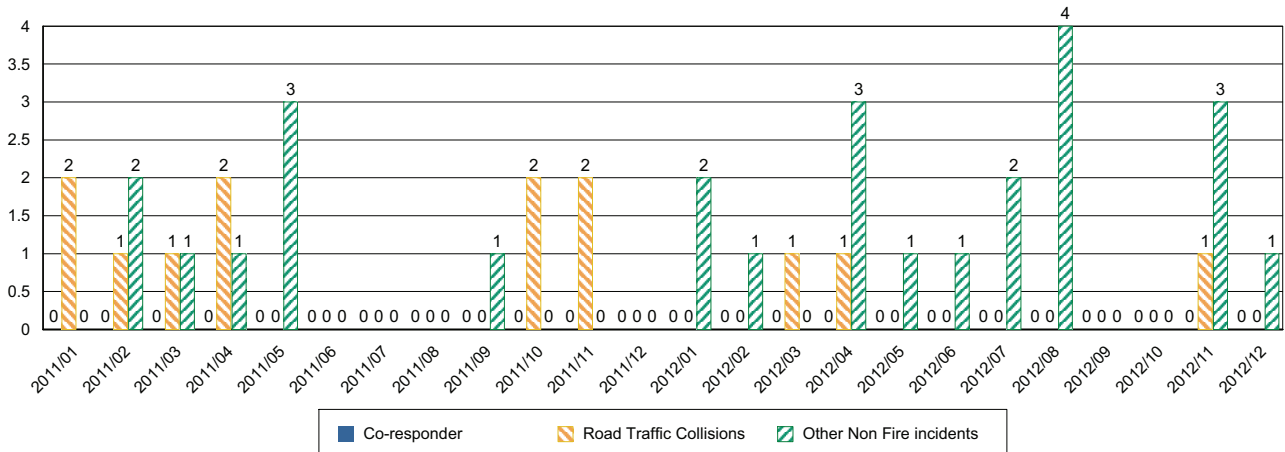
Incidents and Calls



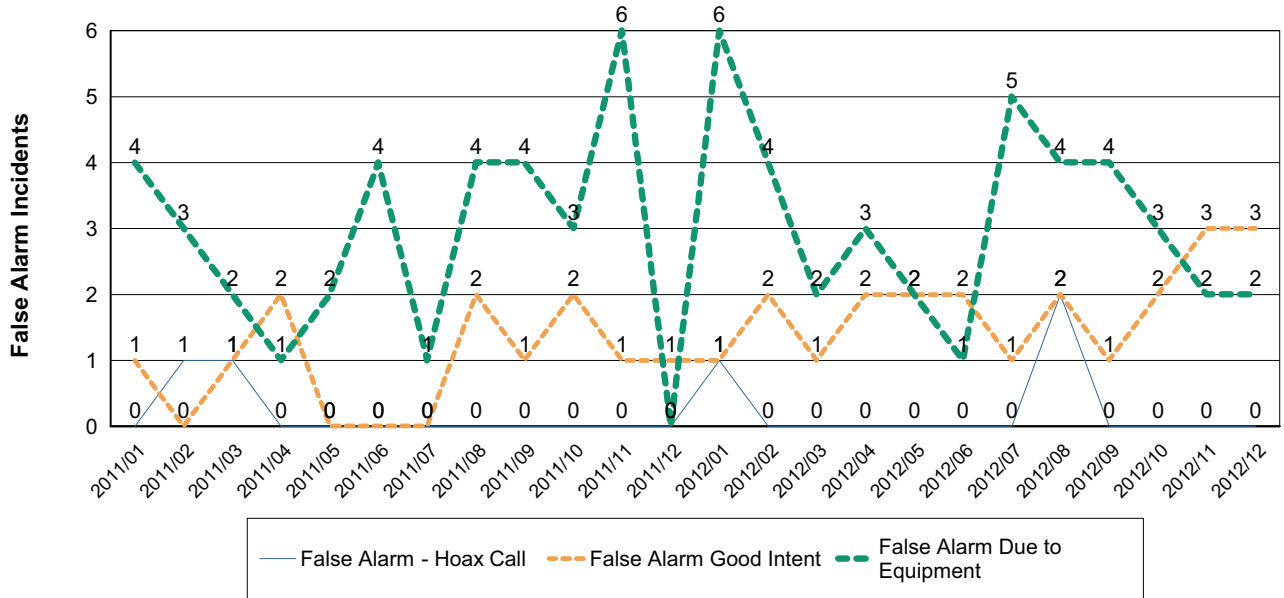
Fires by Cause



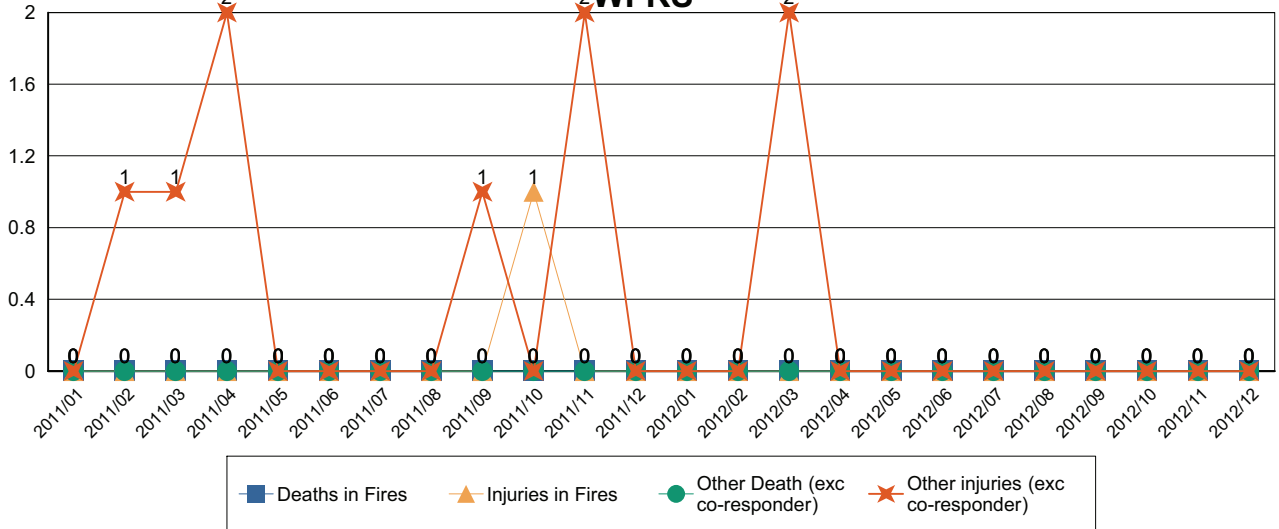
Non-Fire incidents attended by WFRS



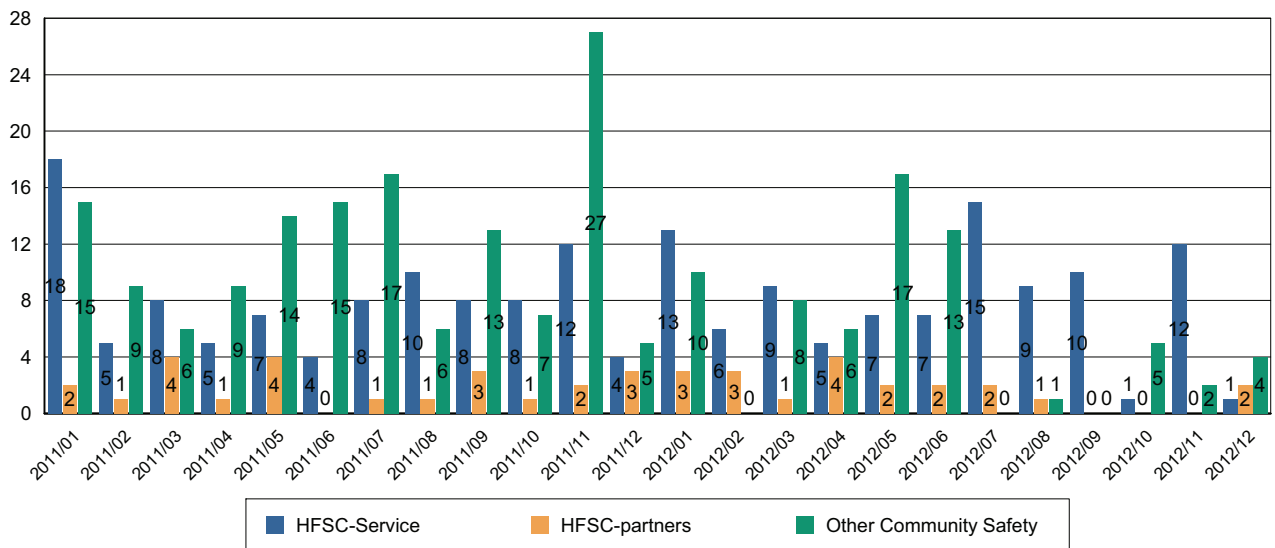
Number of False Alarm Incidents



Death & Injuries in incidents attended by WFRS



Home Fire Safety Checks and other domestic safety



Comments and Interventions overleaf

February update 2013

Keep warm and well

With the recent heavy snowfall and icy conditions, NHS Wiltshire is urging people to keep warm and well this winter:

“The cold can have serious consequences, increasing the risk of strokes and heart attacks as well as colds and flu,” says Medical Director Steve Rowlands “Wrapping up warm, keeping the heating turned up and keeping a well-stocked medical cabinet incase you do catch a cold or flu are all sensible steps to take.”

“It’s particularly important to stay indoors during very cold weather if you have a respiratory illness – and all elderly people should avoid going out on icy pavements. This means staying at home until later in the morning when the ice has melted. Even if you have a doctor’s appointment first thing, try and reschedule it for later – your surgery will usually be happy to help with this. It’s better to wait than risk falling on the ice.”

NHS Wiltshire has produced five top tips on staying warm and well this winter.

1. **Keep your home warm** – set your central heating to between 65 and 70 degrees Fahrenheit (18-21 degrees centigrade). Heat the room you sit in during the day to 70 degrees, and your bedroom to 65 degrees. When it’s very cold (as it is at present), set the heating to come on earlier so that you’re not waiting for your home to warm up.
2. **Have your flu jab.** Everyone over 65, or with a wide variety of health conditions, is entitled to one free of charge. Immunity takes effect almost immediately, so even though a flu outbreak is currently well underway, you can still protect yourself by getting the jab – just call your GP to make an appointment.
3. **If you do fall ill with flu, it’s best to stay at home.** Flu is caused by a virus, and cannot be treated with antibiotics – so a visit to your GP is not necessarily the best course of action.
4. **Vomiting and diarrhoea bugs** caused by norovirus are common and very infectious. This can be a very unpleasant condition, but the best advice is to stay at home and drink plenty of fluids until the symptoms pass. Norovirus is highly infectious, with an incubation period of between one and three days. For that reason, you should wait 48 hours after symptoms have stopped before going back to work or school.
5. **Keep a well-stocked medicine cabinet**, with supplies of ibuprofen, paracetamol and your favourite cold remedy at hand.

Where to go when you’re ill

The following points should be helpful when deciding who to contact.

- Pharmacies offer over-the-counter medicines and advice. As well as being open during regular retail hours, they operate an out-of-hours service on a rota basis;
- Call NHS Direct for advice on 0845 46 47 or go to www.nhsdirect.nhs.uk. They can give a wide range of advice and information about many conditions;

- Use the minor injuries units at Chippenham and Trowbridge for cuts, burns and other injuries – but not for colds, flu or vomiting;
- Make an appointment with your own GP - an out-of-hours service is also available;
- If it is a genuine emergency, go to your local A&E department or call 999 for an ambulance.

Local campaign to increase teenage booster uptake

As you may know tetanus, diphtheria and polio vaccination is given to young people aged between 13 and 18 as part of the school leavers booster. Locally the vaccine is offered to Year 10 pupils attending Council maintained schools by school nurses. Children attending independent schools are normally vaccinated through their GP practice. Across Wiltshire coverage rates of slightly over 95% have been achieved, which is in line with national averages. However, uptake figures vary significantly between individual GP practices ranging from 76% to 100%. Furthermore there has been little improvement in uptake over recent years. In response to this the Wiltshire Public Health Department have embarked on a campaign to:

- Raise the awareness among both recipients - the teenagers themselves - and their parents;
- the general public and
- local clinicians.

The campaign has been developed in partnership with young people and involves texting, posters and signposting to pertinent websites including Sparksite and the Healthy Schools websites.

The campaign began on the 7th January 2013 for about three months, with around 14,500 texts going out to teenagers on 15th January 2013. A press release will also go out after this date and posters will be displayed in local libraries and schools throughout January, February and March. It is envisaged that the campaign will be evaluated mid 2013.

The next PCT Board Meeting will be held on **Thursday 27 February** – venue to TBC – please refer to the NHS Wiltshire website: www.wiltshire.nhs.uk
 Members of the public are welcome to attend. Papers are published a week before the meeting on or on request from Stacey Saunders, NHS Wiltshire, email: stacey.saunders@wiltshire.nhs.uk
www.wiltshire.nhs.uk



CALNE COMMUNITY AREA PARTNERSHIP

February 2013 Update

Following the incorporation of Calne Springs CIC (Community Interest Company) it has been recognised that there needs to be effective lines of communication between CCAP and Calne Springs CIC. The first step was to prepare a 'Partnership Agreement' between the two organisations to ensure that matters of mutual interest are fully explored, especially those relating to the local economy. This will enable appropriate action to be taken by each relevant body within a timely manner.

The Steering Group of CCAP has recently been expanded to incorporate a Youth WG and a Fairtrade WG. The Youth WG will continue with their own agendas (such as the new Skate Park) but will join in the SG discussions to ensure that their voices are heard at all levels. The Fairtrade WG are working to promote Fairtrade within Calne and more specifically, to make Calne a Fairtrade Town.

Theme Group Reports

Calne Community Hub (Rebecca Field)

Over Christmas and New Year the Hub was closed for 10 days.

January has seen the Hub capitalising on its success. The front windows have been booked by various groups who wish to create displays and advertise themselves. For example, Calne in Bloom now has a display showing many certificates won last year as well as photographs of some of the local garden displays. Further displays have been booked. There is now a new volunteer –Rachelle- who has volunteered to coordinate the window displays.

Visitor numbers have fallen over the last few days of snow and freezing weather, but all the groups have continued running and expect to be well used throughout the year.

Transport (Anne Henshaw)

The Transport Board work is completed and they should be erected in 6 locations through the town within the next few months.

The group are now actively putting together a Green Transport day, with emphasis on cycling, to be held in September. It is hoped that it will be held on the same day as the Calne Food and Wine Festival and make a really interesting event.

Crime & Safety (Ross Henning)

This group has continued with good attendance at its meetings. The multi agency foot patrols with the police worked really well especially with members of CARP taking a special interest and producing a very good report on the needs and desires of young people out and about in town on a weekend evening. It is hoped to have more patrols in the future

Other youth issues have been raised with concerns over the use and future of the Grove and youth issues included in the Campus discussions.

Other notable items have included the use of the Calne Police Facebook page to try to identify offenders caught on CCTV.

Catching up on ongoing issues discussions have included the Springfield School entrance and associated road safety issues, hopes for strong community support from the PCC and litter in the town especially after the Friday market.

Environment (Peter Knight & Sue Wallace)

Friends of Abberd Brook (FAB) held a coffee morning (more are planned) and have received the proofs for an interpretation board, which will hopefully go on site in March. FAB is currently raising funds through a can recycling project. Castlefields Canal and River Park Association (CARP) carried out working parties, mainly to tidy up wooded areas.

Calne Environmental Network (CEN) held a raffle for a water butt prior to Christmas, as well as a Christmas Social (with CCAP). CEN is also trying to organise a bulk-buying scheme, whereby people from different addresses can group together to bulk buy fruit and vegetables at wholesale prices, and are holding a litter-pick soon at Porte Marsh Ind. Estate.

Plans are being drawn up to run Bee Wild In Calne again in 2013. This scheme, which helps plant wild flowers in public places and private properties, ran successfully last year. Members of CEN and FAB are again working closely with Calne Town Council in 2013 regarding Calne in Bloom/Britain in Bloom displays.

Economy (Paul Ogden)

Paul Ogden who is Vice-chair of the partnership, President of Calne Chamber of Commerce and a Director of Calne Springs CIC is now heading up the economy theme group. The close links this provides can only be of benefit to the community. Paul is arranging for the Chamber of Commerce constitution to be amended so that these close links can be maintained in the future. The Master Planning process undertaken by Calne Town Council and Wiltshire Council has highlighted many areas where we can work together in partnership to improve the local economy. We will be scrutinising the plan closely over the next month to identify specific project to start working with.

Always of concern for the economy is the condition of Porte Marsh Industrial estate. The Chamber has recently undertaken a survey of businesses on the estate and are due to report back their findings and recommendations at the end of January. It is probable that one of

the recommendations will be to proceed in the promotion of the area as a Business Improvement District (BID).

Housing (Richard Ayles)

Since Richard has been appointed as the Theme Group leader for Housing, he has visited the GreenSquare offices in Chippenham and have been briefed by Jan Morse, their Neighbourhood Manager.

There are two areas of general housing concern at the moment:

1. Impending government legislation on over-occupancy in accommodation paid for by the taxpayer.
2. Welfare Reform

On item 1, GreenSquare and no doubt other agencies are working to identify which households are going to be affected and contacting them with a view to support. Possible solutions include taking a lodger, mutual exchange and applying for a move.

On item 2, Welfare Reform, Wiltshire Council is sending out information to claimants. There is also information available on the web as well as CAB.

Health and Social Care Forum (David Evans)

The last meeting was held on Tuesday 13th November 2012 at James House, Calne. Short presentations with questions afterwards were given by representatives from the Avon and Wiltshire Mental Health Partnership Trust - Denise Claydon, Service Director - Liaison and Later Life Strategic Business Unit and David Bolwell, Wiltshire Area Manager - Adult Acute Community Strategic Business Unit. They spoke about people with mental health issues in the past were not expected to recover but now the expectation is that everybody can recover and come out of secondary care into primary care for support where the majority of people are treated. Secondary services after GP referral are based on a recovery-based approach which is more accessible through Adult Social Care. The range of services teams include: Older Age, Complex Interventions, Memory Specific Services, Advocacy Services. National service user referral maximum targets are 4 weeks from GP to assessment, 4 weeks to allocation to an Allocated Care Co-ordinator and a further 13 weeks to start Treatment.

The Mental HealthTrust had recently appointed a new Chief Executive and they have reorganised their services to put mental health treatment on a more equal footing with physical health care and to make the service more local focussed.

Denise Cooper – Community Engagement Co-ordinator of the Somerset Care Group gave a short presentation about the new initiatives that her work involved in the Help to live at home service and the volunteer programme to make services more customer focus with greater service user engagement. Somerset Care is one of the four major care services commissioned by Wiltshire Council to provide the Help to live at home service. Somerset

Care also helps service users decide what package of care they will pay for and signposting to other services available.

Other local health and social care issues were discussed. Updates were given on the changes in the commissioning of primary and secondary care services as well as the Wiltshire Involvement Network being replaced by Healthwatch Wiltshire from 1st. April 2013.

The next meeting of the Calne and Social Care Forum is planned to be held on Thursday 21st February at 10.15 at James House. If any reader is interested in coming, please contact the Chairperson David Evans initially (djeevans@yahoo.com)

Malcolm Gull

Chair, CCAP

Area Board

for the Calne Community Area

Sandpit Road (\$106) Working Group

Notes of the Working Group Meeting: 23rd October 2012

Attendees: Cllr Tony Trotman (Wiltshire Council)
Anne Henshaw (CAT/CCAP), Ashley Ponting (Save Calne Marsh Group - Residents Association), Cllr. Heather Canfer (Calne Town Council), Cllr. David Short (Calne Town Council), Linda Roberts (Calne Town Council), Mark Stansby (Wiltshire Council - Senior Traffic Management Engineer), Stephen Hind (Wiltshire Council, Principle Engineer, Highway Network Improvements), Steve Corbin (Wiltshire Council Transport Planning Assistant), Jane Vaughan (Wiltshire Council - Calne Community Area Manager).

Apologies: Jacqui Radford (John Bentley School), Philip Wrenn (Save Calne Marsh Group - Residents Association)

Notes of this meeting were taken by Jane Vaughan.

Malcolm Gull (chair of CCAP) has withdrawn from the group as he felt that he could not add any value to the group and that Anne Henshaw also represented the CCAP and would be able to feedback to and from the Partnership in future.

Tony Trotman reported that a resident from the new development is interested in joining the group. There was some concerns about how this person would be brought up to date with the work of the group and how it has arrived at the current position.

Progressing Focus Points:

- **Feedback from 1st October site visit by Highways Officers (Steve Hind and Steve Corbin)**
- a) Woodhill Rise/Oxford Road link for cycle/pedestrian dual use provision to and from Sandpit Road development to schools and workplaces, with the possibility of a pedestrian crossing at Oxford Road.

Steve Corbin explained that there were a few options that could be considered with regards to developing a dual use link these included: Advertising section 228 notice to allow cycles to use the path; reinstating ditch; upgrading surface of the path and reinstating

ACTIONS

TT make contact with Julie Musk with a view to becoming a group member.

TT – make recommendation to the Area Board to undertake

bollards or gates to deter motor vehicles. The group recognised that there was a need to consult with local residents and to identify whether any of the households on Woodhill Rise holds legal vehicular access over the path.

Steve Hind reported that a metro count has been requested at Oxford Road; however results are not yet available. The group noted that pedestrian counts taken at the moment may not currently show high usage.

- b) Safe routes to schools from Sandpit Road development through Abberd Way and to consider a safe crossing for pedestrians and cyclists across Prince Charles Drive at the Honeymead junction, which would include necessary traffic calming measures.

Steve Hind reported that a request for a survey of the area has been submitted and results are due at the start of November. Preliminary designs are being drawn up that will include a ramped or flat crossing area, with a narrowing of the road in the approach to encourage reduced speeds. It was noted that new double yellow lines would be needed and concern was expressed about the possible impact this might have upon residents parking. Other concerns were expressed about poor drivers using the layout as a chicane and about cyclists assuming that they would have priority over the crossing. It was decided that plans should be available for discussion at the Area Board on 11th December.

- **Progress of traffic calming measures at the Sandpit Road/Oxford Road junction towards the town centre with metro counts, and the possibility of any further funding from new accepted developments in Oxford Road.**

At its meeting on 14th August 2012 the Calne Area Board approved a 4 – 8 week temporary trial of this piece of work, conditional upon a ground survey proving that it was a feasible programme of work.

There was a discussion about possible contradictions that might emerge as a result of this working group and others currently at work in the area. It was felt that the 'Master Plan working group' that has begun to meet may help to avoid this and it was also felt that this groups current plans are good and will only become more relevant in the context of further new development by encouraging traffic to use the

consultation with local residents and undertake further investigations into progressing with a section 228 notice.

All – keep this on the agenda for future meetings.

TT – take plans to the Area Board for discussion on 11th December.

bypass.

- **Update re. Calne aggregates planning application with additional traffic movements in Sandpit Road.**

Tony Trotman reported that this application (12:03244) has been received and is being dealt with by Strategic Planning, consultation is open until November 21st and a decision is expected December 12th. The group discussed additional pressures that potential additional traffic movements could place upon Sandpit Road.

- **Discussion on the future use of Abberd Lane bridleway which bounds the Eastern boundary of the Sandpit Lane Development.**

The Group discussed the use of Abberd Lane Bridleway as a vehicular access, and it was decided that it could only be considered if further developments came forward towards the East.

Feed back to and recommendations for the Area Board on 14th August 2012.

- Ask the Area Board to:
 - note these meeting notes
 - undertake consultation with local residents and undertake further investigations into progressing with a section 228 notice with regards to Woodhill Rise/Oxford Road link for cycle/pedestrian dual use provision to and from Sandpit Road development.
 - consider the designs being produced with regards to a safe crossing for pedestrians and cyclists across Prince Charles Drive at Honeymead junction, which would include necessary traffic calming measures.

Date of future meetings

It was agreed that Tony Trotman will call the next meeting in the new year. JV will arrange the venue and notify the group.

TT feedback to the Area Board on 11/12/12 and seek approval of all recommendations

TT/JV arrange next meeting

Report to	Calne Area Board Report
Date of Meeting	5th February 2013
Title of Report	Community Benefits achieved through the Planning Process

Purpose of Report

To provide the Area Board with an update on the last 7 years of Section 106 agreements in the Calne Community Area.

The report details the following:

1. What is a Section 106 agreement and how are they agreed
2. Summary of money received, money spent and money outstanding
3. How to access funding if there is funding available
4. Emerging policy on funding infrastructure requirements

1. Background

- 1.1. A request was made by Calne Area Board for an update on the money secured through Section 106 agreements in the Calne Community Area over the last 7 years.
- 1.2. An exercise has recently been carried out to capture all Section 106 agreements in Wiltshire. A Scrutiny Task Group was set up to help monitor the progress made on this work so that the same information can be given to every Area Board. This report provides all the details captured in the Calne Community Area.

2. Main Considerations

2.1. What is a Section 106 Agreement?

- 2.1.1. The definition of a Section 106 Agreement is :

“Section 106 (S106 of the Town and Country Planning Act 1990) allows a local planning authority (LPA) to enter into a legally-binding agreement or planning obligation with a landowner in association with the granting of planning permission. The obligation is termed a Section 106 Agreement.

- 2.1.2. These agreements are a way of delivering or addressing matters that are necessary to make a development acceptable in planning terms. They are increasingly used to support the provision of services and infrastructure, such as highways, recreational facilities, education, health and affordable housing”.

- 2.1.3. The Council needs to have robust mechanisms in place to secure funding from developers towards the cost of infrastructure. These mechanisms must be supported by a comprehensive infrastructure planning evidence base, which shows what infrastructure is needed, how much it costs, how it will be funded, and when and how it will be delivered. Presently, the Council uses Section 106 agreements to negotiate developer contributions towards infrastructure from each separate development.

- 2.1.4. The North Wiltshire Local Plan 2011 has a Core Policy on Community Infrastructure. This sets out how the provision for the **directly related** community infrastructure costs of development proposals, appropriate to the scale of that development, will be sought.

- 2.1.5. The Council will examine each development proposal for its need to contribute to the following community infrastructure requirements and negotiate to secure planning obligations or by means of other appropriate methods to secure the requirements identified. The community infrastructure requirements are:

- Affordable housing
- Education, skill training provision and libraries
- Travel and transport infrastructure
- Community buildings and facilities
- Health care provision and social services
- New or improved open spaces
- Leisure, sport and recreation provision
- Waste management and recycling
- Environmental protection and enhancement
- Information Communication Technology infrastructure
- Art in the community

2.1.6. It is unlawful for the Council to spend Section 106 money on anything which is not in accordance with how it is set out in the specific agreement.

2.1.7. Within each agreement there are trigger points for when the money has to be paid to the beneficiary Services. These triggers are often different for each development and are negotiated with the applicants before the agreements are signed. Examples of trigger points could include “payment on completion of the 10th house”, “payment prior to first occupation”, “payment on commencement of development”.

2.1.8. These trigger points are recorded by the s106 Monitoring Officer and actively monitored by the beneficiary services

2.2. Emerging policy - role of Section 106 Agreements in the future

The latest Government legislation makes it clear that it intends to revise the current system with the introduction of Community Infrastructure Levy (CIL). This will be a new charge based on the principle of providing infrastructure to support development. In other words, it is a system of pooled contributions that can be spent on infrastructure across a wider area, whereas Section 106 contributions will in future be limited to site specific infrastructure and affordable housing. In time, the current use of Section 106 agreements to collect pooled contributions will be limited because CIL is the Government’s preferred mechanism in this regard. From April 2014, in line with legislation, local authorities will be restricted on the amount of pooled contributions they can collect through Section 106 Agreements, as such Wiltshire Council intends to become a CIL Charging Authority before this point.

2.3 The Council’s approach to delivering infrastructure in the future is set out in Core Policy 3 of the draft Wiltshire Core Strategy (Wiltshire Core Strategy Pre-Submission Document, February 2012). Core

Policy 3 states that “*Upon adoption of the CIL Charging Schedule, CIL will be used to pool developer contributions towards a wide range of new and improved infrastructure necessary to deliver new development*”. The policy also recognises that Section 106 Agreements may still play a role in securing contributions directly related to specific developments, although there can be no double charging for infrastructure through both CIL and Section 106 Agreements.

- 1.1.2 An Infrastructure Delivery Plan has been prepared alongside the Core Strategy to inform the infrastructure requirements of new development planned for Wiltshire. This forms the basis on which Wiltshire Council can move forward on the preparation of CIL.

However, in response to the latest government guidance relating to the process of preparing a CIL, the Council is in the process of gathering further detailed evidence on viability; as well as building its policies in relation to the future application of Section 106 and CIL to support the consultation on the Draft Charging Schedule, which will now be published in July 2014. Although this additional work has led to a delay, a legally compliant and robust Wiltshire CIL will be in place by February 2014 and thereby closely tied to the adoption of the Wiltshire Core Strategy. While the CIL is being developed Section 106 Agreements will continue to be used.

3. Section 106 Agreements in the Calne Community Area

- 3.1 Appendix 1 sets out all of the Section 106 Agreements in the Calne Community Area secured in the last 7 years.
- 3.2 The table shows all of the agreements which have secured financial obligations along with the details of where the funding has been sought, how much has been negotiated for each beneficiary area and whether we have received money.
- 3.3 The ‘total received’ column on the appendix shows all the contributions that have been received by the Council. This money may have already been spent on the allocated projects as specified in the Section 106 agreement.
- 3.4 The update position/comment shows some more details about the current situation. Members will note that there are a large amount of agreements where the money is not due yet because trigger points have not been reached or the work has not commenced.

4 Financial update

- 4.1 In total £3,664,185 has been secured via a Section 106 legal agreement since 2004. Of this amount, £667,435 has already been received by the Council, leaving £2,996,750 outstanding.

4.2 Of the £2,996,750, £2,970,240 is not yet due to be paid as the development has not commenced or the appropriate trigger points have not been reached.

4.3 Therefore the Council is actively investigating/chasing £20,100 of outstanding Section 106 obligations.

5 Access to funding

5.1 All Section 106 Agreements specify how the financial contributions should be spent.

5.2 Funding for Affordable Housing is ring fenced for the provision of affordable homes to meet demonstrable need. However, in some instances, there has been a need to review some of the Section 106 obligations on affordable housing due to market conditions and scheme viability issues. In these cases it is likely that any financial contribution could be negated.

5.3 Education contributions are discussed and agreed with all parties throughout the planning process and any funding will have been set for specified projects relating to the development.

5.4 The majority of highways contributions are very specific and funding is allocated to particular projects. In some cases, contributions are secured towards outcomes where the project(s) are less well defined, and which offer the Council some limited discretion over how the contribution may be spent. These are normally in towns where overarching transport strategies already exist and it is intended to involve the Community Area Transport Groups (CATG) in helping to decide priorities.

5.5 The Land Adoptions team, who are responsible for the allocation of Section 106 money obtained specifically for public open space, are in the process of contacting all Town and Parish Councils to notify them of any unspent money. Any enquiries relating to this should be sent to landadoptions@wiltshire.gov.uk or contact Stuart Harper from the Land Adoptions team on 01380 734682. Funding secured via a commuted sum will be fed into the budgets for ongoing maintenance of sites.

6 Environmental & Community Implications

6.1 There are no Environmental and Community Implications

7 Financial Implications

7.1 Section 106 money must be spent in line with Section 106 Agreement and cannot be used for other projects not related to the

development.

8 Legal Implications

8.1 There are no specific Legal implications related to this report.

9 HR Implications

9.1 There are no specific HR implications related to this report.

10 Equality and Inclusion Implications

10.1 There are no specific Equality and Inclusion implications.

11 Officer Recommendations

11.1 There are no officer recommendations.

Appendices	Appendix 1 – Summary of Section 106 Agreements in the Calne Community Area.
-------------------	---

No unpublished documents have been relied upon in the preparation of this report.

Report Author	Sally Canter, Head of Customer and Technical Support, Development Services Telephone: 01249 706630 email: sally.canter@wiltshire.gov.uk
----------------------	--

Report to	Calne Community Area Board
Date of Meeting	5th February 2013
Title of Report	Community Area Grants

Purpose of Report

To ask Councillors to consider 5 applications seeking 2012/13 Community Area Grant Funding:

- 1. CCAP – Fairtrade project** - requesting £994 to pump prime a project that will encourage and promote Calne as a Fairtrade Community Area.

Officers recommend that a grant of £994 is awarded.

- 2. Friends of Abberd Brook** – requesting £1,750 towards a community art project to produce a mosaic at the Prince Charles Drive Underpass.

Officers recommend that a grant of £1,750 is awarded, conditional upon the balance of funding being in place.

- 3. Derry Hill & Studley Village Hall Trust** – requesting £4,940 towards the refurbishment of kitchen facilities.

Officers recommend that a grant of £4,940 is awarded, conditional upon the balance of funding being in place.

- 4. SPLASH** – requesting £4,600 towards ‘Calne ... Get Out There’ project offering sports, outdoor and residential activities for young people living in the Calne Community Area.

Officers recommend that a grant of £4,600 is awarded conditional upon the balance of funding being in place and the applicant liaising with the Calne Youth Development Co-ordinator.

- 5. Derry Hill Defibrillator Project** – requesting £1,000 towards the purchase of a defibrillator for the village hall.

Officers recommend that this request for funding is declined, based upon a consideration of advice received from professional officers and that the applicant is advised to liaise with the First Responders Scheme and Public Health Officers for alternative approaches to addressing this issue.

1. Background

- 1.1. Area Boards have authority to approve Area Grants under powers delegated to them by the Deputy Leader and Cabinet member for Community Services. Under the Scheme of Delegation Area Boards must adhere to the Area Board Grants Guidance for funding.
- 1.2. In accordance with the Scheme of Delegation, any decision of an Area Board that is contrary to the funding criteria and/or the officer's recommendation would need to demonstrate that the application in question has a wider community benefit, and give specific reasons for why this should justify an exception to the criteria.
- 1.3. The emphasis in the Coalition Government's Localism agenda supports the ethos of volunteering and community involvement. With this in mind Community Area Grants should be encouraged from and awarded to community and voluntary groups.
- 1.4. Area boards will not consider applications from town and parish councils for purposes that relate to their statutory duties or powers that should be funded from the local town/parish precept. However this does not preclude bids from town/parish councils, encouraging community projects that provide new opportunities for local people or those functions that are not the sole responsibility of the town/parish council.
- 1.5. In addition to Community Area Grants, Councillors can submit an Area Board Project which differs from Community Area Grants in that they do not require match funding. Area Board Projects should not be used to avoid complying with Community Area Grant criteria.
- 1.6. Area Board Projects are designed to enable the Area Board to address community issues or projects identified in the Community Plan/Local Agreement for Wiltshire. An application form is used and quotes for project work have to be provided in a similar manner to the Community Area Grant Scheme.
- 1.7. Officers are required to provide recommendations in their report, although the decision to support applications and to what level is made by Wiltshire Councillors on the Area Board.
- 1.8. Funding applications will be considered at every Area Board meeting.
- 1.9. Paper copies of funding applications will no longer appear as part of the agenda in an attempt to reduce volume of paper used. However, the application forms will be available on the Wiltshire Council web site and hard copies available upon request.
- 1.10. Information and forms are available at: (www.wiltshire.gov.uk/areaboards) or paper versions are available from the Community Area Manager.

<p>Background documents used in the preparation of this Report</p>	<ul style="list-style-type: none"> • Community Area Grant Application Pack 2012/13 • Calne Community Area Plan – 2004-14 (incl. 2006/2010 update) • Area Board Grants Guidance 2012/13 • Wiltshire Joint Strategic Assessment 2011
---	--

2. Main Considerations

- 2.1. Councillors will need to be satisfied that grants awarded in the 2012/13 year are made to projects that can realistically proceed within a year of the award being made.
- 2.2. The funding contained within this report forms the final round of funding for 2012/13.

3. Environmental & Community Implications

Community Area Grants will contribute to the continuance and/or improvement of cultural, social and community activity and wellbeing in the community area, the extent and specifics of which will be dependent upon the individual project.

4. Financial Implications

- 4.1. Awards must fall within the Area Boards budget allocated to the Calne Community Area Board.
- 4.2. Following awards made at the meeting up to and including 11th December 2012 the budget remaining available to the Calne Community Area Board for 2012/13 was £17,744.
- 4.3. If grants are awarded in line with officer recommendations, the Calne Community Area Board will have a balance of £5,460.

5. Legal Implications

- 5.1. There are no specific Legal implications related to this report.

6. HR Implications

- 6.1. There are no specific HR implications related to this report.

7. Equality and Inclusion Implications

- 7.1. Community Area Grants give all local community and voluntary groups, Town and Parish Councils an equal opportunity to receive funding towards community based projects and schemes.

7.2. Implications relating to individual grant applications are outlined within section 8 – “Officer Recommendations”.

8. Officer recommendations

Ref	Applicant	Project proposal	Funding requested
8.1	Calne Community Area Partnership	Fairtrade project	£994

8.1.1. **It is recommended that Calne Community Area Partnership is awarded a grant of £994 to pump prime a project that will encourage and promote Calne as a Fairtrade Community Area.**

8.1.2. Officers are of the opinion that this application meets grant criteria for 2012/13.

8.1.3. The project links to the Calne Community Area Partnerships issues around the economy and the environment and about creating a cohesive and vibrant community.

8.1.4. The project also links to issues that are being identified through the Calne Town Council ‘Town Team’ and the ‘Calne Springs’ working group that is looking at ways to encourage and promote retail trade in the Community Area and also a pride amongst local people in their town centre.

8.1.5. The achievement of Fairtrade status would be a valuable promotional tool for local retail businesses and the process of achieving it would provide opportunities for attracting positive media attention to the Community Area.

8.1.6. The Calne Area Board passed a resolution supporting the principles of Fairtrade on Tuesday, 19th April, 2011. As a result the town achieved one of the 5 goals laid down by the Fairtrade Foundation.

8.1.7. An award to this project will cover 100% of the cost of the project.

8.1.8. If the Area Board makes a decision not to fund the project the scheme will be delayed while alternative funding is sought.

Appendices:	Appendix 1 Grant application – CCAP / Fairtrade project
--------------------	--

Ref	Applicant	Project proposal	Funding requested
8.2	Friends of the Abberd Brook (FAB)	Community Art Mosaic at Prince Charles Drive Underpass.	£1,750

- 8.2.1** It is recommended that the Friends of the Abberd Brook (FAB) are awarded a grant of £1,790 towards a community art project to produce a mosaic at the Prince Charles Drive Underpass, conditional upon the balance of funding being in place.
- 8.2.2** Officers are of the opinion that this application meets grant criteria for 2012/13.
- 8.2.3** The project addresses issues and aspirations outlined in the Calne Community Area Plan; to promote community activities that promote a sense of pride and well being and activities that encourage children and young people to take a constructive role in the community.
- 8.2.4** The Abberd Brook forms an important traffic free route which has been identified as an important safer route to and from the town centre, not only by FAB, but also the former Area Board Safer Routes working group, the Sandpit Road working group, the CATG working group and Calne Area Transport group. The proposed project will enhance this route.
- 8.2.5** In addition the project will be facilitated by local artists from the Calne Artists group and will involve children, young people and their parents/carers with opportunities to discover and explore engaging in the arts and intergenerational activity.
- 8.2.6** FAB has previously run a similar project on the other side of the underpass, which it funded from its own reserves and alternative funding streams.
- 8.2.7** This is an area which had previously been identified as being prone to minor incidents of anti-social behaviour and also to negative forms of graffiti. Following the completion of the previous project no further incidents have been reported.
- 8.2.8** An award to this project will represent approximately 30% of the overall project costs.
- 8.2.9** If the Area Board makes a decision not to fund the project the scheme will be delayed while alternative funding is sought.

Appendices:	Appendix 2 Grant application – Friends of the Abberd Brook
--------------------	---

Ref	Applicant	Project proposal	Funding requested
8.3	Derry Hill & Studley Village Hall Trust	Refurbishment of kitchen facilities.	£4,940

8.3.1 It is recommended that Derry Hill & Studley Village Hall Trust is awarded a grant of £4940 towards the refurbishment of kitchen facilities, conditional upon the balance of funding being in place.

8.3.2 Officers are of the opinion that this application meets current grant criteria for 2012/13.

8.3.3 The project addresses aspirations in the Calne Community Area Plan to increase facilities in the Calne Community Area, to exceed national guidelines.

8.3.4 This project will provide a modern facility for the use of a wide range of community groups and individuals within a well used village hall.

8.3.5 Members may wish to note that the Parish Council has not contributed to this project. However the Village Hall Committee has allocated all of its free reserves for the project.

8.3.6 The grant being requested from the Calne Area Board represents approximately 33% of the total cost of the project.

8.3.7 If the Area Board makes a decision not to fund the project the scheme will be delayed while alternative funding is sought.

Appendices:	Appendix 3 Grant application – Derry Hill and Studley Village Hall Committee.
--------------------	--

Ref	Applicant	Project proposal	Funding requested
8.4	SPLASH	'Get Out There' – sports, outdoor and residential activities for young people from the Calne Community Area.	£4,600

8.4.1 It is recommended that SPLASH is awarded a grant of £4,600 towards the 'Calne – Get Out There' Project, conditional upon the balance of funding being in place and the applicant liaising with the Calne Youth Development Co-ordinator to assess where savings could be made and extra activity be

included in the project plan.

- 8.4.2** Officers are of the opinion that this application meets current grant criteria for 2012/13.
- 8.4.3** It is recognised that communities need positive activities to engage young people during school holidays to reduce boredom which often leads to anti social behaviour and conflict within communities.
- 8.4.4** This project addresses aspirations in the Calne Community Area Plan to increase activities that encourage children and young people to take a constructive role in the community.
- 8.4.5** The project also addresses 2 key points relating to young people listed in the Joint Strategic Assessment: increasing things for young people to do and obesity, healthy eating and exercise.
- 8.4.6** This project aims to provide opportunities for approximately 100 young people to engage in 10 days of activities including: climbing, mountain biking, fishing, dance, canoeing/kayaking and an overnight camping experience in the woods. The project will be run by fully trained & experienced facilitators.
- 8.4.7** Work that SPLASH has undertaken in the past with young people and local groups and organisations suggest that holiday activities that are affordable for young people are important. This project will be free to all young people from the Calne Community Area in order to ensure that no one is excluded from taking part as a result of financial constraints.
- 8.4.8** The Area Board may wish to note that SPLASH has previously concentrated upon projects that engage young people from across the County. However this project has been designed specifically for the Calne Community Area and will be planned in consultation with community partners and young people from Calne.
- 8.4.9** The Youth Development Co-ordinator has confirmed that this project would enhance youth provision in the community area and has suggested that SPLASH engage with the forthcoming Youth Advisory Group in order to consult with young people about their aspirations.
- 8.4.10** The Area Board will note that project costs are high compared to youth activities funded previously (eg. CAYPIG 'Things to do Places to go' 4 week programme of summer activities 2011 = £4,285) and may wish to consider asking the applicant to liaise with the Youth Development Co-ordinator to discuss where savings could be made and more activities could be included in the project.
- 8.4.11** The grant being requested from the Calne Area Board represents approximately 50% of the total cost of the project.
- 8.4.12** If the Area Board makes a decision not to fund the project the scheme will run at a reduced level.

Appendices:	Appendix 4 Grant application – SPLASH.
--------------------	---

Ref	Applicant	Project proposal	Funding requested
8.5	Lansdowne Hall Trust	Purchase of a Defibrillator.	£1,000

- 8.5.1 It is recommended that a request for funding this project is declined in line with advice received from professional officers and that the applicant is advised to liaise with the First Responders Scheme and Public Health Officers for alternative approaches to addressing this issue.**
- 8.5.2** Officers are of the opinion that this application meets current grant criteria for 2012/13.
- 8.5.3** The project also links to aspirations in the Calne Community Area Plan to increase access to health care facilities.
- 8.5.4** A defibrillator is a machine designed to deliver an electric shock to a person whose heart has stopped. Termed a cardiac arrest, this is different from, but may be caused by, a heart attack, where blood flow to the heart is impaired.
- 8.5.5** Advice received from Public Health Officers suggests that defibrillators are best suited to venues with large numbers of people, such as visitor venues like Bowood, Salisbury Cathedral or Avebury. Whether the Lansdowne Hall constitutes this kind of venue is a question that should be raised when considering this application. (see appendix 6)
- 8.5.6** Ambulance data for Wiltshire in 2008/09 shows that the number of heart attack calls in the Calne Community Area was 7 and that not all of these would have required the use of a defibrillator. (see appendix 6)
- 8.5.7** The Area Board may also wish to note that the Parish Council has made a contribution towards this project and that several other area boards have also made contributions towards similar projects around the County. However there are also examples of other area boards declining similar requests.
- 8.5.8** It should be considered that there are at least 10 village Halls in the Calne Community Area and that an award to this project would set a precedent for similar applications from each one of these. This would represent the allocation of funds equivalent to almost a quarter of the Area Board's Community Budget.
- 8.5.9** The grant being requested from the Calne Area Board represents approximately

33% of the total cost of the project.

8.5.10 If the Area Board is inclined to make a decision to fund the project, it must consider that ongoing costs associated with the project will need to be met and that the applicant has suggested these will be found through local fundraising.

8.5.11 If the Area Board decides to decline this application it may wish to consider suggesting that the applicant liaises with the Calne First Responders Scheme and Public Health Officers for alternative approaches to addressing this issue.

Appendices:	Appendix 5 Grant application – Derry Hill and Studley Village Hall Committee. Appendix 6 Briefing note – Defibrillators in Public Places, Briefing note.
--------------------	---

No unpublished documents have been relied upon in the preparation of this report.

Report Author	Jane Vaughan, Community Area Manager Tel: 01249 706447 E-mail jane.vaughan@wiltshire.gov.uk
----------------------	--

